



CT-R5-BRZ-ISP-101210-EN

Practical,  
Efficient, Comfortable Diagnosis

SonoAce R5 Ultrasound system



**Samsung Medison** is one of the world's leading researchers, developers and manufacturers of ultrasound and other medical imaging products. Founded in 1985, Samsung Medison was acquired by Samsung Electronics in February 2011. Throughout its history, the company has achieved a series of technological breakthroughs, such as introducing the world's first commercially available 3D and 4D diagnostic ultrasound scanners. Driven by an investment of 12 percent of revenues into R&D, its range of machines now covers everything from the lightest and most portable of scanners, to the very latest and most sophisticated in ultrasound technology. Samsung Medison also produces digital X-rays and other medical imaging products.

[www.samsungmedison.com](http://www.samsungmedison.com) / [marketing@samsungmedison.com](mailto:marketing@samsungmedison.com)



# Practical, Efficient, Comfortable Diagnosis

The SonoAce R5 is designed to provide you not only with the latest in diagnostics function, but also the greatest possible user convenience. Interface and an ergonomic design, and the quality of its everyday functions, such as Quick Scan™, FSI™, and THI, will enable you to extend your diagnostic boundaries while enjoying a more comfortable working environment.



Lifting control panel



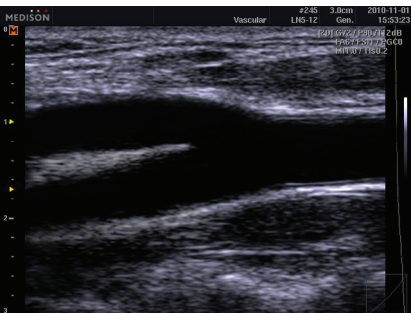
Front and rear handle



## A more convenient and comfortable working environment

The SonoAce R5 is a slim and compact ultrasound system, featuring the latest in ergonomic design. The lifting control panel, front and rear handles and lightweight system make the SonoAce R5 easy to move and use in any situation. The improved user interface and customizable menus provide the highest quality of working environment.

- Lifting control panel
- Front and rear handles
- Slim and lightweight
- 15-inch flat LCD monitor
- Backlit Keyboard



Carotid artery in 2D

## More practical capabilities for ultrasound diagnosis

The SonoAce R5 ultrasound system provides versatile performance for its compact design. The various measurement packages and the advanced user-interface performance deliver quick & easy observation. Full Spectrum Imaging™ is one of the imaging features which gives improved images and help users for better diagnosis.

- Quick Scan™
- Multiple Measurement Packages
- Tissue Harmonic Image
- FSI (Full Spectrum Imaging™)
- Pulse Inversion Harmonic Imaging



Gallbladder stone in 2D

## Multiple transducers allow extended diagnosis

The SonoAce R5 supports linear, curved and phased array probes, extending your diagnostic capabilities.

- CN4-9 : Neonatal, Pediatric
- C2-8 : Ob/Gyn, Abdomen, Renal
- CN2-8 : Ob/Gyn, Abdomen, Renal
- C2-4/20 : Cardiac, Vascular, Abdomen
- LN5-12 : Small Parts, Breast, Vascular, MSK
- LN5-12/40 : Small Parts, Breast,Vascular, MSK
- LN5-12/60 : Small Parts, Breast,Vascular, MSK
- EVN4-9 : Ob/Gyn, Urology
- EC4-9 : Ob/Gyn, Urology



Power doppler image of hand

